

# 279C, 289C, 299C

Compact Track Loaders

**CATERPILLAR®**



**Cat C3.4 DIT Diesel Engine**

Net Power

**279C**

61 kW/83 hp

**289C**

61 kW/83 hp

**299C**

67 kW/91 hp

**Weights**

Operating Weight

4487 kg

4702 kg

4867 kg

**Operating Specifications**

Rated Operating Capacity at 50% Tipping Load

1451 kg

1746 kg

1882 kg

## Features

### Sealed and Pressurized Cab

*Sealed and pressurized cab option provides a cleaner and quieter operating environment.*

### Seat Mounted Adjustable Controls

*Ergonomic seat mounted adjustable controls and available air ride seat can be adjusted to meet your personal preference.*

### Suspended Undercarriage

*Suspended undercarriage features low ground pressure so you can work on sensitive surfaces and in soft underfoot conditions.*

### High Performance Power Train

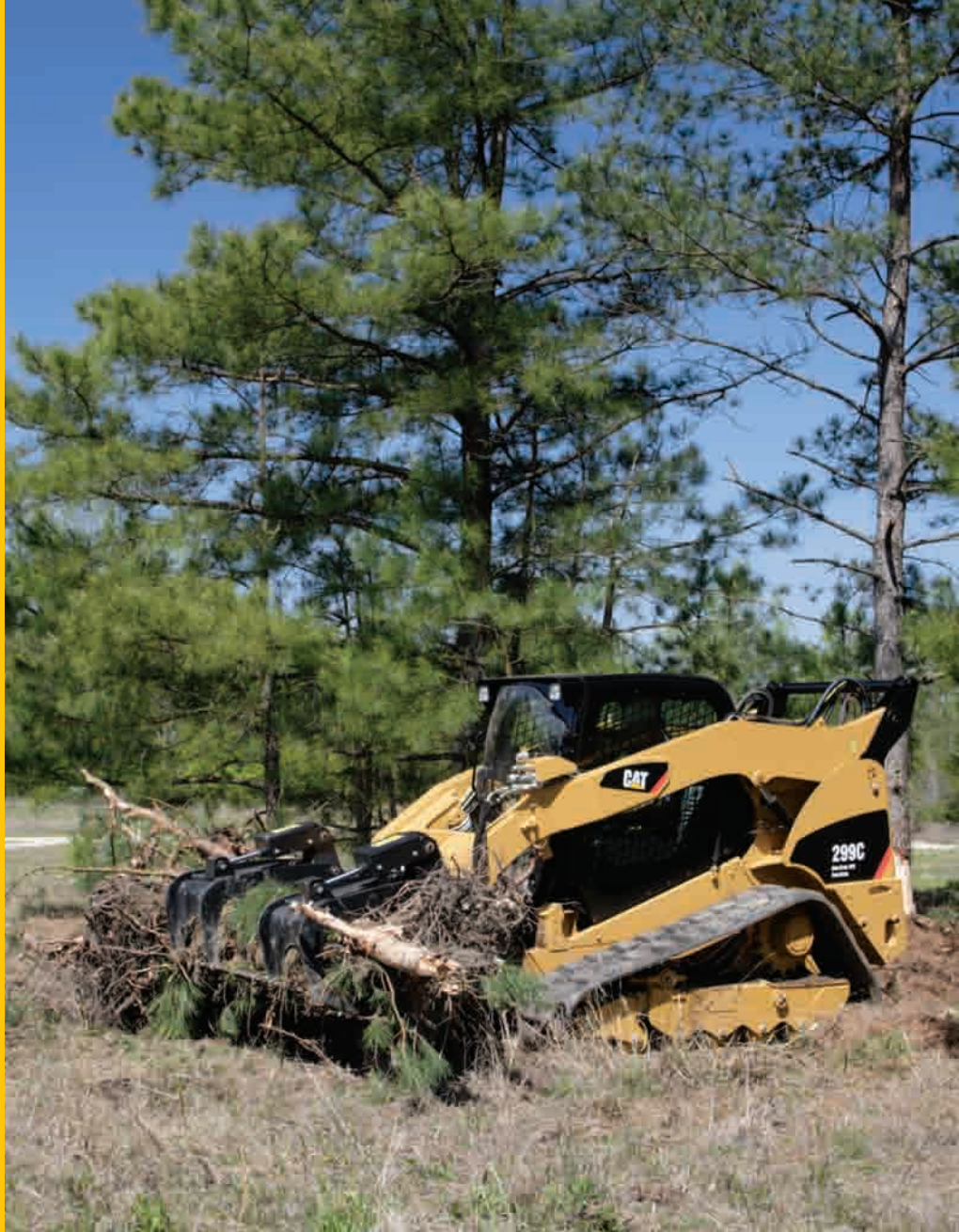
*Increased horsepower and higher torque deliver outstanding performance.*

### High Flow XPS Hydraulic System

*High flow XPS hydraulic system available on all models for applications demanding maximum hydraulic work tool performance.*

### More Work Tools

*Caterpillar's broad range of performance matched work tools make the Cat Compact Track Loader the most versatile machine on the job site.*



## Contents

Operator Station .....	3
Hydraulics .....	4
Undercarriage .....	4
Power Train .....	5
Lift Linkages .....	5
Work Tools .....	6
Serviceability .....	7
Customer Support .....	7
Specifications .....	8
Standard Equipment .....	11
Optional Equipment .....	11

**The new Cat C-Series Compact Track Loaders lead the industry in operator comfort, performance and versatility. Inside the spacious operator station, feel the superior comfort of a sealed and pressurized cab. Adjustable seat mounted controls and an available air ride seat keep you comfortable throughout the work day. Low ground pressures, increased rated operating capacities, higher horsepower and excellent drawbar performance help you get more done and increase your bottom line.**

# Operator Station

Superior comfort to keep you productive throughout the work day.

## Superior Comfort

Comfort and ease of operation have been designed into every aspect of the operator station. The wide, spacious interior and uncluttered floor provide a comfortable work environment with excellent head, shoulder and leg room to keep productivity high and fatigue low.

## Sealed and Pressurized Cab

Operators spend long hours in the machine. The new optional sealed and pressurized cab keeps dust out and clean air in for greater operator comfort. Reduced sound levels within the cab also help reduce fatigue.

## Seat Mounted Joystick Controls

Ergonomic, seat mounted joystick controls enable a wide range of comfortable operating positions for operators of any size. The seat and controls are independently adjustable to meet the specific needs of the operator.

## Advanced Machine Information and Control System

The optional Advanced Machine Information and Control System (AMICS) provides easy to read analog gauges for hydraulic oil and engine coolant temperature. The electronic display provides additional operating information such as engine speed, job clock and diagnostic service codes. Selectable Work Speed Control and Selectable Implement Control allow the operator to dial in his machine to maximize production.

## Additional Features for Maximum Comfort

The C-Series machines offer the following additional features to help you on the job:

- Air ride seat available for an unparalleled level of comfort in a compact track loader.
- Easy to read instrument panels.
- Optional air conditioner and heater for greater comfort in extreme conditions.
- Optional Selectable Pattern Control which allows the operator to select the control pattern they are most familiar with for greater productivity.



# Hydraulics

Exceptional lift, breakout and power to meet your needs.



## High Performance Hydraulic System

Maximum power and reliability are built into the Cat Compact Track Loader hydraulic system. In addition to providing power to the tracks, this system also powers the loader lift and tilt functions, powers the auxiliary circuit to drive work tools and drives the engine cooling fan. The C-Series hydraulic system features increased lift and tilt breakout forces allowing you to move more material and get more done. The continuous demand fan provides improved fuel efficiency, increased horsepower, reduced sound levels and improved cold weather performance. Cat ToughGuard™ hoses increase reliability and durability. High capacity hydraulic tank and side-by-side cooling package keep components cool for maximum durability.

## High Flow XPS

High flow XPS hydraulic system is available on all models for greater machine versatility. Maximum performance can be maintained regardless of the work tool speed or conditions with this load sensing, pressure compensating system. Caterpillar cooling systems are sized to allow the operator to continuously power high flow work tools in conditions that cause competitive machines to overheat.

## Selectable Implement Control

The Selectable Implement Control option with three levels of control gives the operator the ability to adjust the responsiveness and speed of the lift and tilt functions for more precise implement control.

## Standard Two Speed

Two speed, offered as standard equipment, increases top speed up to 13.6 km/h allowing you to finish jobs faster.

# Steel Embedded Rubber Track Undercarriage

Industry-first suspended undercarriage for versatility, durability, comfort.

Caterpillar introduces the industry's first fully suspended undercarriage for a Compact Track Loader. The heavy-duty torsion axles suspend the CTL undercarriage and can move independently relative to the machine and each other. These axles absorb most of the shock to the undercarriage, machine and operator, especially over rough terrain. This means smooth travel, even at high speeds, as well as better load retention and greater productivity. The tread design ensures a smooth ride and a great combination of traction and flotation. The C-Series CTL offers ground pressures ranging from 27.2 kPa to 29.6 kPa.

The CTL undercarriage system features highly durable and easily maintained components. Steel imbeds provide a rigid support for the entire width of the track and provide excellent durability in a wide variety of applications. Continuously wound cables hold these imbeds in place and provide tensile strength, ensuring the track does not stretch. Following the same philosophy as Caterpillar Track-Type Tractors, the elevated external positive drive system keeps drive components away from ground debris. Planetary final drive motors improve torque and drawbar performance, delivering more power to the ground. Steel rollers with metal face seals provide maximum protection for wheel bearings resulting in long-term durability and reliability in even the toughest conditions. The simple recoil grease tensioning system allows quick track tension adjustment.



# Power Train

Aggressive performance with fuel efficiency.

## Cat Engine

The high performance power train provides high engine horsepower and torque. The C-Series features the Cat C3.4 DIT engine – a rugged, reliable diesel engine that is Stage IIIA compliant. The 299C is equipped with an Air-to-Air After Cooler (ATAAC) for better fuel efficiency and lower emissions as well as increased horsepower and torque.

## Hand and Foot Throttles

Hand and foot throttles allow the operator to match engine speed to the task. The hand throttle is ideal for jobs requiring constant engine speed such as cold planing, trenching or snow blowing. The foot throttle lets the operator vary engine speed and minimize fuel consumption for other tasks such as load and carry, truck loading, grading and dozing.

## Electronic Torque Management

The Electronic Torque Management system maximizes power to the ground and prevents the engine from stalling in tough digging and dozing applications for maximum productivity. The system allows part throttle operation which provides smoother machine operation and reduces fuel consumption.

## Selectable Work Speed Control

The optional Selectable Work Speed Control lets you select the ground speed that is best suited for the application. This feature is useful in operations such as trenching and cold planing that require precise machine control at relatively slow and constant speeds.

# Lift Linkages

Built for tough working conditions.

## Choice of Lift Designs

Two types of lifting arrangements are available on the C-Series Compact Track Loaders – vertical lift (path no. 1 above) and radial lift (path no. 2) – to meet your specific application needs.

## Vertical Lift

The 289C and 299C feature the vertical lift design which provides extended reach and lift height for quick and easy truck loading and material placement. The lift height is 3239 mm on the 289C and 3286 mm on the 299C.

## Radial Lift

The 279C, with its radial lift design, delivers excellent digging performance and superior mid-lift reach.



# Work Tools

Do more jobs with one machine using Cat Work Tools.

## The Right Tool for the Job

Get the most out of your Cat Compact Track Loader with the comprehensive line of Cat Work Tools. Designed and built for optimum performance and durability, these tools deliver high productivity in a variety of applications to maximize the versatility and flexibility of the Cat C-Series:

- Augers
- Backhoes
- Blades (angle, dozer)
- Buckets (general purpose, high capacity, dirt, utility, light material, multi purpose, industrial grapple, utility grapple)
- Brooms (angle, pickup, utility)
- Brushcutters
- Cold Planers
- Forks (pallet, industrial grapple, utility grapple, utility)
- Hydraulic Hammers
- Landscape Tillers
- Landscape Rakes
- Material Handling Arm
- Mulcher
- Power Box Rakes
- Shear
- Snow Blowers
- Stump Grinders
- Trenchers
- Vibratory Compactors
- Wheel Saws

## Quick Couplers

Work tools can be changed quickly and easily with the Cat Compact Track Loader's quick coupler system. The standard quick coupler features manual engagement and disengagement of work tools using two high leverage handles. The optional hydraulic quick coupler allows the operator to quickly change tools without leaving the cab.



# Serviceability

Simplified service and maintenance save you time and money.



## Easy Service

Convenient service features make maintenance easy, reducing your downtime:

- Rear door opens 90 degrees for easy access to both sides of the engine.
- Cooling package tilts up to provide excellent access to the engine compartment.
- Cab tilts rearward for easy access to all hydraulic pumps, motors, valves, lines and hydraulic tank.
- Daily maintenance points are easily accessible.
- Wires are color coded and numbered for easy identification.
- S•O•S<sup>SM</sup> oil sampling valves are standard to allow regular monitoring of the engine and hydraulic oil quality.

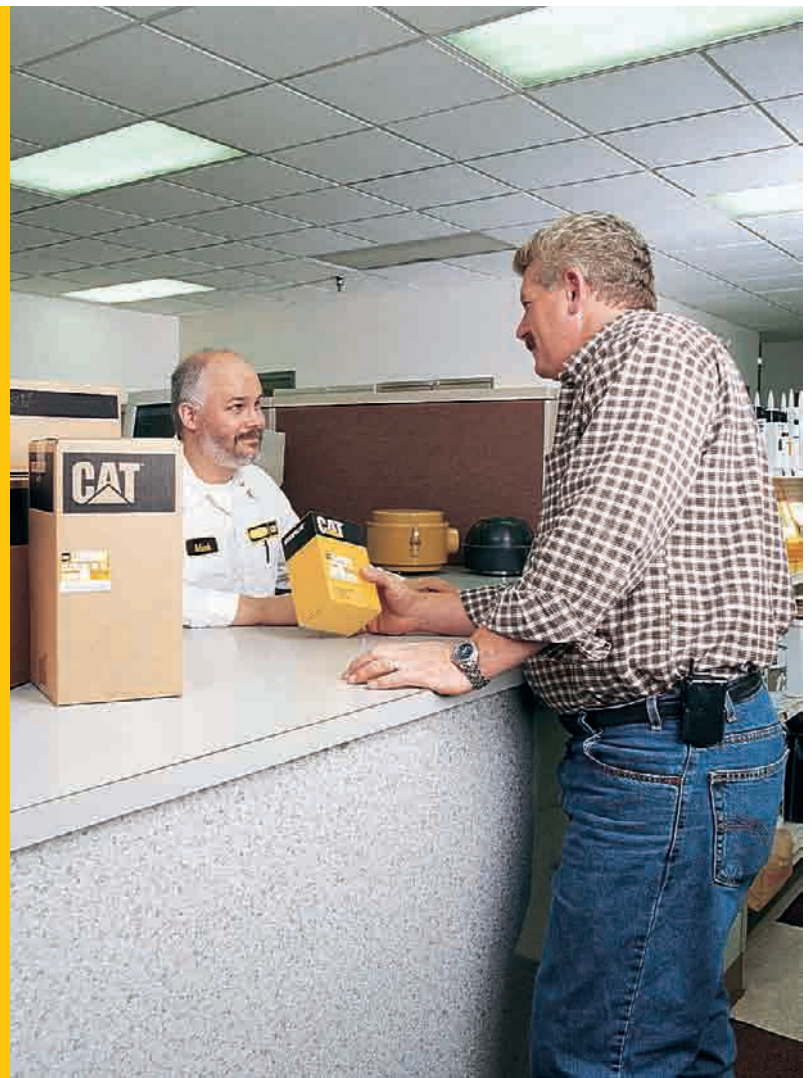
## Customer Support

Unmatched support makes the difference.

### Superior Dealer Service

Your Cat dealer is ready to assist you with your purchase decision and everything after.

- Make detailed comparisons of the machines you are considering before you buy – with estimates of component life, preventative maintenance and the true cost of production.
- Customize the machine that is right for you using the Build and Quote application on your dealer's website or [www.cat.com](http://www.cat.com).
- Financing packages are flexible to meet your needs.
- Repair option programs guarantee the cost of repairs up front.
- Nearly all parts are available at the dealer parts counter.
- Operator training can improve your operator's techniques and boost your profits.
- Your Cat dealer can evaluate the cost involved in repairing, rebuilding and replacing your machine so you can make the right choice.



# 279C, 289C, 299C Compact Track Loaders Specifications

## Engine

Cat C3.4 DIT	
Net Power	
279C/289C	61 kW/83 hp
299C	67 kW/91 hp
Gross Power	
279C/289C	63 kW/86 hp
299C	70 kW/95 hp
Bore	94 mm
Stroke	120 mm
Displacement	3.3 L

## Weights

Operating Weight	
279C	4487 kg
289C	4702 kg
299C	4867 kg

## Operating Specifications

Rated Operating Capacity (50% Tipping Load)	
279C	1451 kg
289C	1746 kg
299C	1882 kg
Rated Operating Capacity (35% Tipping Load)	
279C	1016 kg
289C	1222 kg
299C	1318 kg
Rated Operating Capacity width Optional Counterweight	
279C	1572 kg
289C	1860 kg
299C	2004 kg
Tipping Load	
279C	2941 kg
289C	3502 kg
299C	3782 kg
Breakout Force, Tilt Cylinder	3315 kg
Ground Contact Area	1.62 m <sup>3</sup>
Ground Pressure	
279C	0.27 bar
289C	0.29 bar
299C	0.30 bar

## Hydraulic System

Hydraulic Flow	Standard
Loader Hydraulic Pressure	230 bar
Loader Hydraulic Flow	84 l/min
Hydraulic Power	31.9 kW/43hp
Hydraulic Flow	High Flow XPS
Max. Loader Hydraulic Pressure	280 bar
Max. Loader Hydraulic Flow	125 l/min

## Cab

ROPS	ISO 3471:1994
FOPS	ISO 3449:1992 Level I
FOPS Level II	ISO 3449:1992 Level II

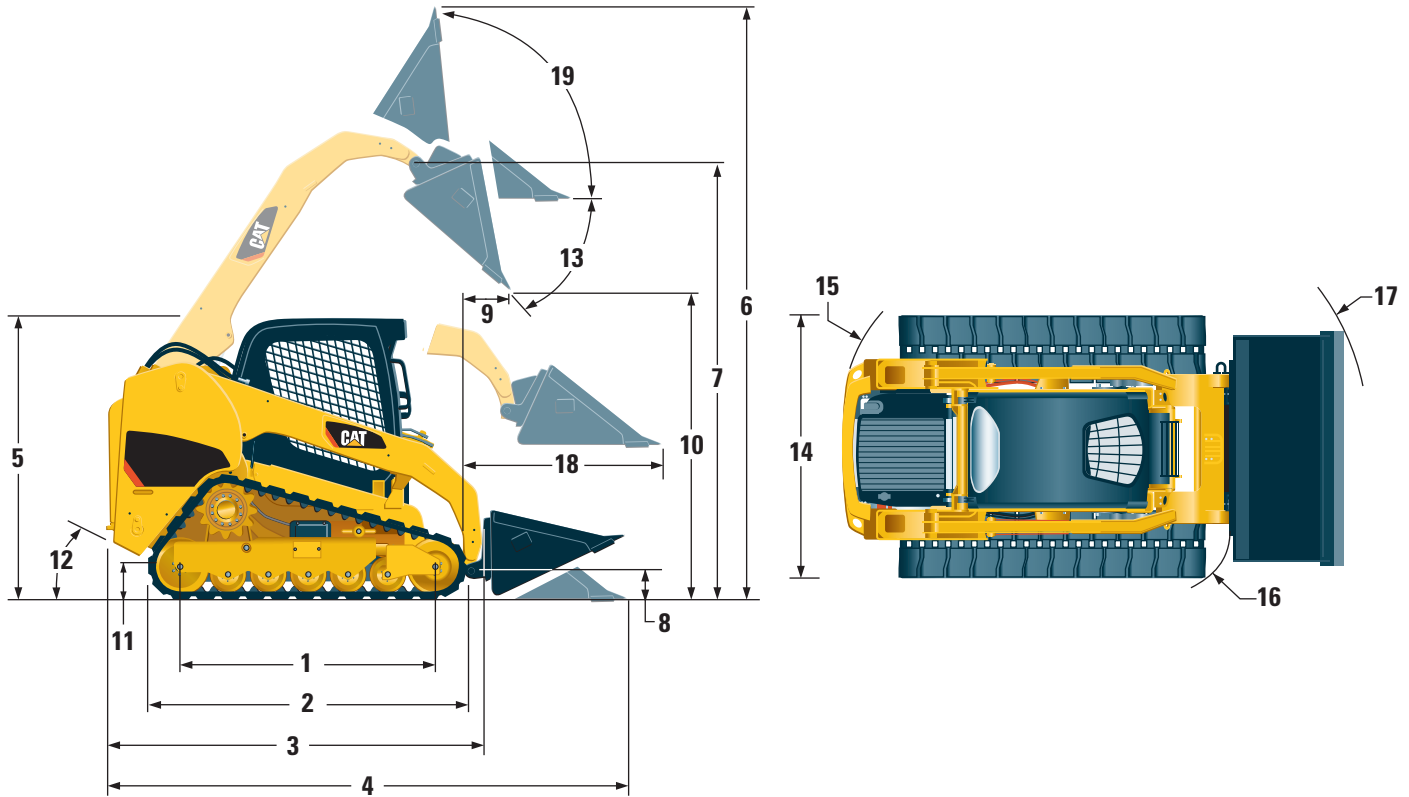
## Power Train

Travel Speed (Forward or Reverse)	8.1 km/h
Travel Speed – 2-Speed (Forward or Reverse)	13.6 km/h

## Service Refill Capacities

	Liters
Cooling system	14
Engine Crankcase	10
Fuel Tank	98
Hydraulic System	57
Hydraulic Tank	42

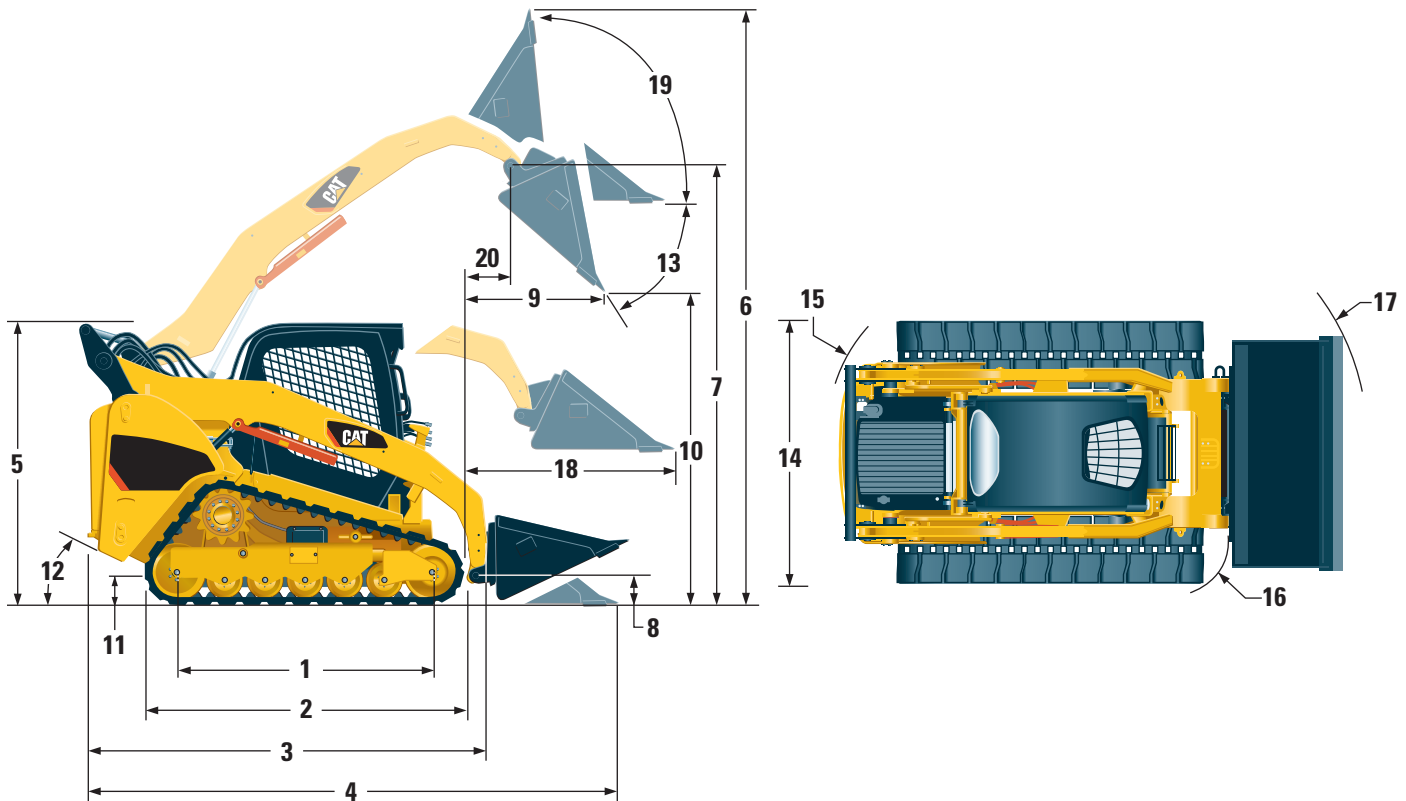
## Dimensions



	<b>279C</b> mm
<b>1</b> Length of Track on Ground	1767
<b>2</b> Overall Length of Track	2270
<b>3</b> Length without Bucket	2960
<b>4</b> Length width Bucket on Ground	3679
<b>5</b> Height to Top of Cab	2117
<b>6</b> Max. Overall Height	4005
<b>7</b> Bucket Pin Height at Max. Lift	3128
<b>8</b> Bucket Pin Height at Carry Position	195
<b>9</b> Reach at Max. Lift and Dump	594
<b>10</b> Clearance at Max. Lift and Dump	2427
<b>11</b> Ground Clearance	231
<b>12</b> Departure Angle	44°
<b>13</b> Maximum Dump Angle	40°
<b>14</b> Vehicle Width	1981
<b>15</b> Turning Radius from Center – Machine Rear	1640
<b>16</b> Turning Radius from Center – Coupler	1471
<b>17</b> Turning Radius from Center – Bucket	2314
<b>18</b> Max. Reach width Arms Parallel to Ground	1387
<b>19</b> Rack Back Angle at Max. Height	85°

# 279C, 289C, 299C Compact Track Loaders Specifications

## Dimensions



	<b>289C</b> mm	<b>299C</b> mm
<b>1</b> Length of Track on Ground	1767	1767
<b>2</b> Overall Length of Track	2270	2270
<b>3</b> Length without Bucket	2960	3101
<b>4</b> Length width Bucket on Ground	3679	3820
<b>5</b> Height to Top of Cab	2117	2117
<b>6</b> Max. Overall Height	4081	4121
<b>7</b> Bucket Pin Height at Max. Lift	3239	3286
<b>8</b> Bucket Pin Height at Carry Position	195	195
<b>9</b> Reach at Max. Lift and Dump	781	763
<b>10</b> Clearance at Max. Lift and Dump	2456	2493
<b>11</b> Ground Clearance	231	231
<b>12</b> Departure Angle	44°	38°
<b>13</b> Maximum Dump Angle	50°	51°
<b>14</b> Vehicle Width	1981	1981
<b>15</b> Turning Radius from Center – Machine Rear	1640	1775
<b>16</b> Turning Radius from Center – Coupler	1471	1471
<b>17</b> Turning Radius from Center – Bucket	2314	2314
<b>18</b> Max. Reach width Arms Parallel to Ground	1282	1269
<b>19</b> Rack Back Angle at Max. Height	85°	83°
<b>20</b> Bucket Pin Reach at Max. Lift	371	374

Optional equipment may vary. Consult your Caterpillar dealer for details

## Electrical

12 volt Electrical System  
90 ampere Alternator  
Ignition Key Start/Stop Switch  
Lights: Gauge backlighting, two rear tail lights, two rear working lights, two adjustable front halogen lights, dome light.  
Backup Alarm  
Heavy Duty Battery, 850 CCA

## Operator Environment

Gauges: Fuel level, hour meter  
Operator Warning System Indicators:  
Air filter restriction, alternator output, armrest raised/operator out of seat, engine coolant temperature, engine oil pressure, glow plug activation, hydraulic filter restriction, hydraulic oil temperature, parking brake engaged  
Vinyl seat, mechanical suspension  
Fold-in Ergonomic Contoured Armrest  
Control Interlock System, when operator leaves seat or armrest raised: Hydraulic system disables, hydrostatic transmission disables, parking brake engages  
ROPS Cab, Open, Tilt Up  
FOPS, Level I  
Top and Rear Windows  
Headliner, Deluxe  
Floor Mat  
Interior Rear View Mirror  
12 volt Electric Socket  
Horn

## Power Train

Cat C3.4 DIT Stage IIIA Compliant Diesel Engine  
Air Cleaner, Dual Element, Radial Seal  
S•O•S<sup>SM</sup> Sampling Valves, Engine Oil and Hydraulic Oil  
Filters, Spin-on, Hydraulic  
Filters, Bayonet-type, Fuel and Water Separator  
Tilt Up Radiator/Hydraulic Oil Cooler  
Spring Applied, Hydraulically Released,  
Wet Multi Disc Parking Brake  
Hydrostatic Transmission, 2 Speed

## Other

Suspension, Torsion Axles  
Engine Enclosure, Lockable  
Extended Life Antifreeze, -37° C (-34° F)  
Machine Tie Down Points (4)  
Support, Lift Arm  
Hydraulic Oil Level Sight Gauge  
Radiator Coolant Level Sight Gauge  
Radiator, Expansion Bottle  
Cat ToughGuard™ Hose  
Auxiliary, Hydraulics, Continuous Flow  
Heavy Duty, Flat Faced Quick Disconnects  
Split D-Ring to Route Work Tool Hoses  
Along Side of Left Lift Arm  
Electrical Outlet, Beacon  
Belly Pan Cleanout

## Mandatora Equipment

Hydraulics, Standard or High Flow XPS  
Quick Coupler, Mechanical or Hydraulic  
Seat Belt, 50 mm (2 in) or 75 mm (3 in)  
Comfort Package (must select one of the following):

- Open ROPS (C1): Cup Holder, Radio Ready, Suspension Seat (no heater or door)
- Enclosed ROPS with Heat (C2): Cup Holder, Radio Ready, Seat (choice of Suspension or Air Ride), Heater and Defroster, Side Windows, Door (either Glass or Polycarbonate)
- Enclosed ROPS with A/C (C3): Features of C2 Package plus Air Conditioner Performance Package (must select one of the following):
  - TL1: Two Speed
  - TL2: Two Speed, Self Level
  - TL3: Two Speed, Self Level, Advanced Machine Information and Control System (AMICS)

Optional equipment may vary. Consult your Caterpillar dealer for details

Counterweight  
Beacon, Rotating  
Engine Block Heater – 120V or 240V  
Oil, Hydraulic, Cold Operation  
Paint, Custom

# 279C, 289C, 299C Compact Track Loaders

For more complete information on Cat products, dealer services, and industry solutions, visit us on the web at [www.cat.com](http://www.cat.com)

HEHL3828 (03/2009) hr

Materials and specifications are subject to change without notice. Featured machines in photos may include additional equipment. See your Caterpillar dealer for available options.

© 2009 Caterpillar – All rights reserved

CAT, CATERPILLAR, their respective logos, "Caterpillar Yellow," and the POWER EDGE trade dress as well as corporate and product identity used herein, are trademarks of Caterpillar and may not be used without permission.

